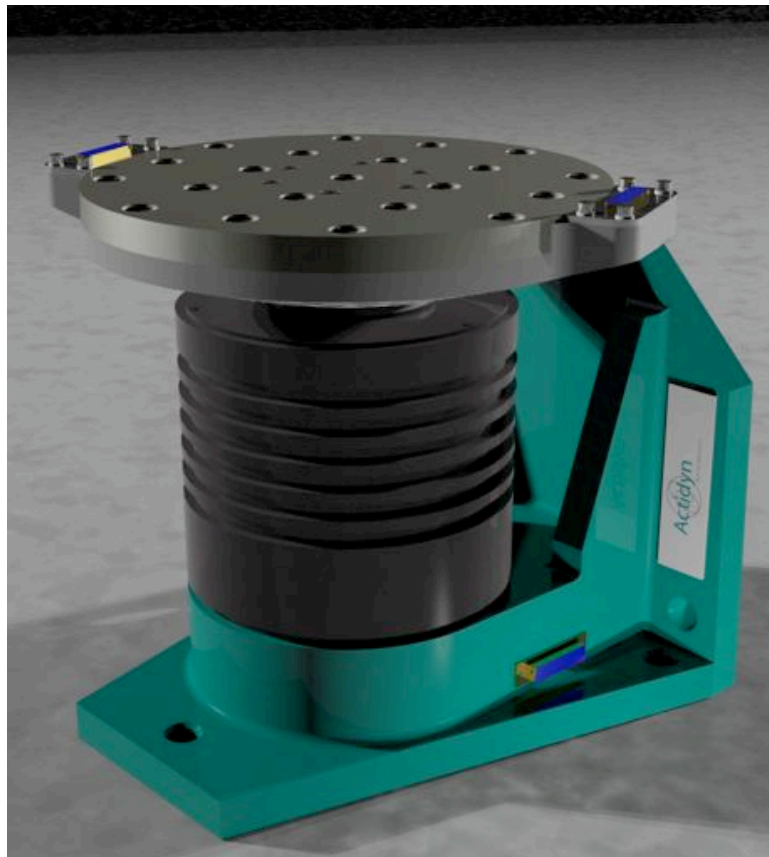


RT 1100 SERIES

ONE AXIS MEMS TABLE

Options:

- **Temperature chamber:**
- 55°C to +185°C
- **Customized electrical slip-rings**
- **Optical fiber rotary joint and Ethernet network**
- **Fluid rotary joints**



The single axis table series RT 1100 is an accurate position rate system designed for the test and calibration of MEMS, gyros, accelerometers and inertial guidance systems.

Its brushless motor technology allows for large servo bandwidth and high dynamic response.

RT 1100 SERIES SPECIFICATION

	RT 1112 P	RT 1112 V	Units
Payload			
Mass (max)	12	12	kg
Diameter	220	220	mm
Height	300	300	mm
Geometry			
Table top diameter	250	250	mm
Wobble	± 5	± 5	Arc second
Rotation	continuous	continuous	
Position			
Accuracy	± 7	N/A	Arc second
Command Increment	0.001	N/A	degree
Repeatability	± 2	N/A	Arc second
Rate			
Range	± 2700	± 2700	°/s
Accuracy	± 0.005		%
Command increment	0.001		°/s
Stability Over 360°	0.001	0.001	%
Dynamic			
Peak torque	127	127	Nm
Nominal torque	23	23	Nm
Inertia (no load)	0.065	0.065	m ² kg
No load Peak acceleration	80 000	80 000	°/s ²
No load continuous accel	20 000	20 000	°/s ²
Servo bandwidth	>100	>100	Hz
Electrical slip-rings			
Alternative optional configuration on demand	30 Channels 2A	30 Channels 2A	
Computer Interfaces			
	RS232, Ethernet and ActiveX software remote		
Input / Output			
Analog input / output (opt)	14 bits, ± 10 V	NA	
Digital output (opt)	1/rev and 5 000/rev	1/rev	

ACTIDYN SYSTEMES ALSO MANUFACTURES THESE EQUIPMENTS TO BETTER SERVE YOU

